

A R C H I P E L A G O



RICHARD FRINIER  
for  
**CENTURY**<sup>®</sup>  
L E I S U R E

# A R C H I P E L A G O

The 17,000 islands of Indonesia that inspired this collection form the largest and most diverse archipelago on the planet, spanning over 3,000 miles between Asia and Australia. The coastline extends over 5,000 miles, which is nearly one-third of the Earth's circumference at the equator.



Here, lush vegetation, inspirational sunrises, romantic sunsets and vast oceans with healing sea breezes encourage harmonious and balanced living.

The fabled destinations of the East and West Indies evoke images of plantation owners, spice traders, world travelers and nobility. These are the exotic locales where centuries-old cultures and modern lifestyles blend to create an aesthetic appreciated by all travelers who have visited these unforgettable destinations.



# SAILCLOTH FABRICS

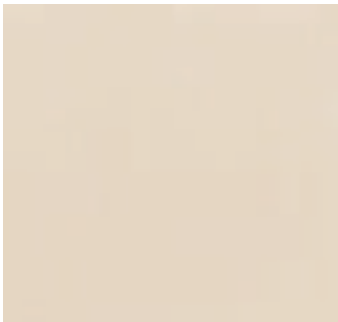
Recommended for all outdoor collections



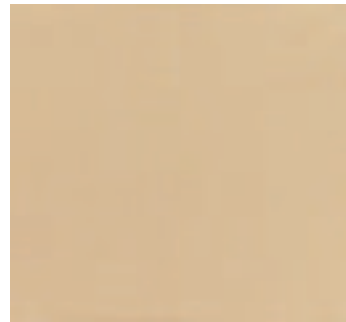
Sailcloth - Sail  
17000-29



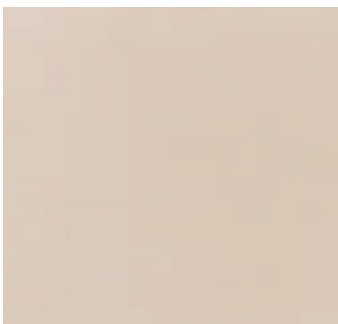
Sailcloth - Shell  
17000-12



Sailcloth - Sand  
17000-21



Sailcloth - Shore  
17000-23



Boucle - Sea Shore - Sand  
17001-21



South Coast - Shore  
15000-23

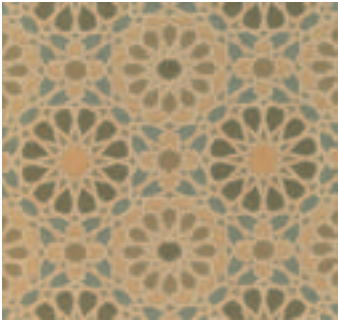
## Sailcloth Features:

- Sailcloth fabrics are recommended for all outdoor collections.
- Sailcloth is required for the back sling portion of Andalusia, but sailcloth, boucle or jacquards may be used for cushions.
- Fabrics shown on cards may not be true to color. Please ask your sales representative for a swatch for exactness of fabric color.
- See Price List for warranty and care and maintenance information.

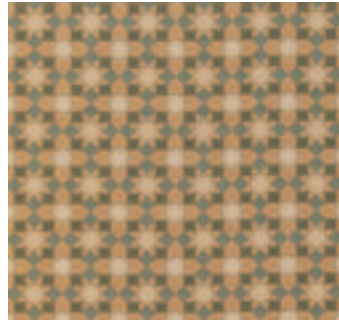


# MEDITERRANEAN FABRICS

Recommended to enhance Andalusia



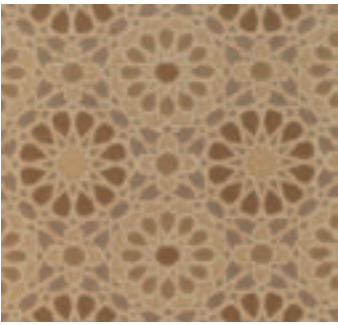
Alhambra - Oasis  
16005-51



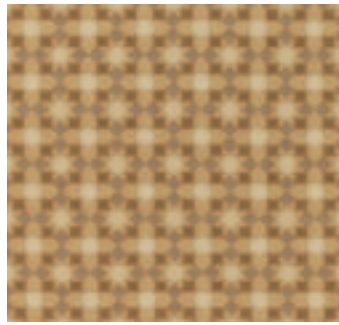
Alcazar - Oasis  
16004-35



Sultan - Camel  
17003-23



Alhambra - Camel  
16005-23



Alcazar - Camel  
16004-23



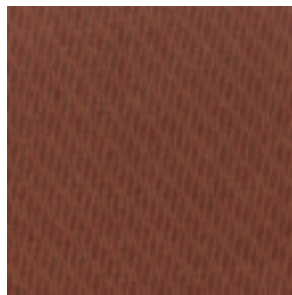
Morisca - Camel  
16003-23

# EXOTIC FABRICS

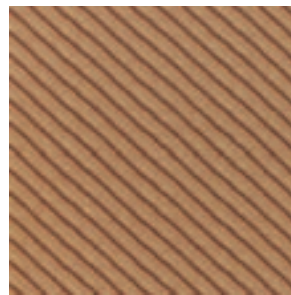
Recommended to enhance Archipelago



Ikat - Henna  
16000-68



Bingata - Henna  
16001-68



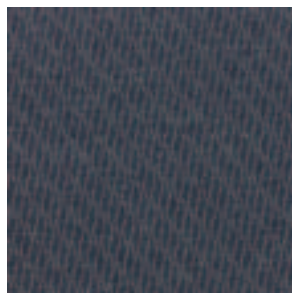
Batik - Henna  
16002-68



Siam - Cinnamon  
17002-37



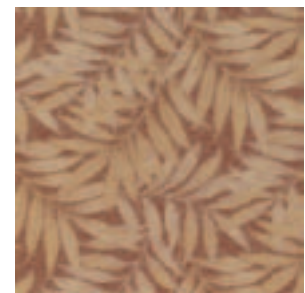
Ikat - Indigo  
16000-57



Bingata - Indigo  
16001-57



Burma - Curry  
14000-23



Burma - Cinnamon  
14000-37



**D11-12**  
**Lounge Chair**  
W31 D36 H36.5  
Finish: D112 Sumatra



**D11-31**  
**Ottoman**  
W31 D31 H18  
Finish: D112 Sumatra



**D11-52**  
**Dining Arm Chair**  
W23 D26 H35.5  
Finish: D112 Sumatra



**D11-51**  
**Dining Side Chair**  
W23 D26 H35.5  
Finish: D112 Sumatra



**D11-57**  
**Bar Stool**  
W18.5 D22.5 H43.5  
Finish: D112 Sumatra



**D11-91**  
**50" Dining Table**  
W50 D50 H30  
Finish: D112 Sumatra



**D11-92**  
**64" Dining Table**  
W64 D64 H30  
Finish: D112 Sumatra



**D11-71**  
**Chaise**  
W46.75 D82.5 H34  
Finish: D112 Sumatra



**D11-42**  
**Love Seat**  
W76.5 D36 H33.5  
Finish: D112 Sumatra



**D11-83**  
**Occasional Table**  
W14 D14 H23  
Finish: D112 Sumatra



**D11-82**  
**Side Table**  
W26 D26 H20  
Finish: D112 Sumatra



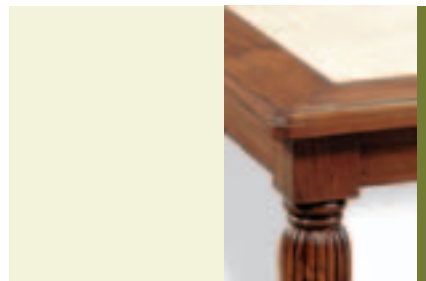
**D11-81**  
**Cocktail Table**  
W32 D44 H17  
Finish: D112 Sumatra



**D99-90-1**  
**60" Cast Stone Dining Table**  
W60 D60 H29.5

## Design Elements:

- Distinctive design featuring authentic British and Dutch Colonial plantation shutter back styling. Details include turned and reeded legs, V-grooving and rosettes.
- Crafted from an unusually versatile and strong variety of teak harvested from the rugged mountains of Southeast Asia.
- Built and finished like quality indoor furniture, but designed for the rigors of full-time outdoor exposure with routine maintenance. In fact, it will look as good in your living room as on your verandah.
- Available in multiple antiqued finishes.
- Generously proportioned and scaled for a luxurious experience. Plush, oversized cushions on all seating. Each cushion is crafted with densified polyester fiber that is waterproof and meets CAL 117 flame retardant standards.
- A tasteful selection of fashionable, high performance fabrics woven from solution-dyed, UV stable acrylic fibers that resist fading, deterioration and mildew.
- Wide and versatile product offering for indoor and outdoor placement, include dining and bar height seating, lounge chair, ottoman, love seat, chaise lounge, dining and occasional tables.
- Travertine tabletops are crafted of a naturally porous sedimentary stone formed over millions of years by pressure exerted on layers of minerals beneath the earth's crust. Holes and crevices are formed by natural erosion from subterranean springs. The luxurious hue of these tabletops was chosen to complement the coloration of each finish in this collection. Travertine stone tops require only occasional cleaning and periodic application of a natural surface sealer.
- Cast stone tables are made from an amalgam of crushed limestone and resin. These tables have a natural ivory color textured appearance and smooth hand. These tables require only periodic cleaning.



## Finishes:

*D101  
Raisin*



*D111  
Borneo*



*D112  
Sumatra*



*D113  
Bali*



*D161  
Timor*





The collections of Richard Frinier for Century Leisure bring home the emotional experience and ambience of world travel. The look is fresh and memorable. Upon first view, these collections take you to a place where you have never been, yet you feel relaxed and at ease to linger.

Century Furniture represents a true benchmark in fine home furnishings. A natural extension of that, the Richard Frinier for Century Leisure collections bring a new level of quality and sophistication to leisure furniture.

Richard Frinier's collections embrace the luxury of world travel, capturing the value and sheer emotion of quality leisure time. These fine furnishings, worthy of the finest estates, residences, hotels, resorts and spas worldwide, bring leisure to a new level of appreciation and enjoyment.

RICHARD FRINIER  
for  
CENTURY®  
L E I S U R E